

Relight My Fire

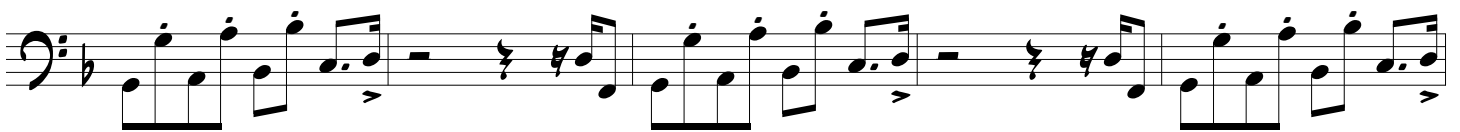
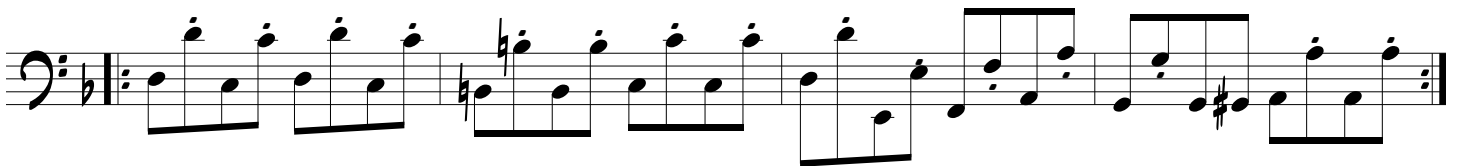
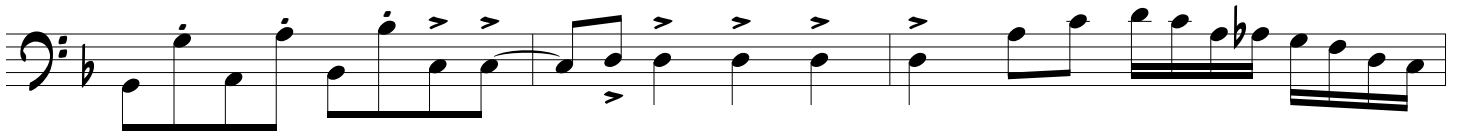
From the album "Relight My Fire"
by Dan Hartman (1979)

- D. Hartman

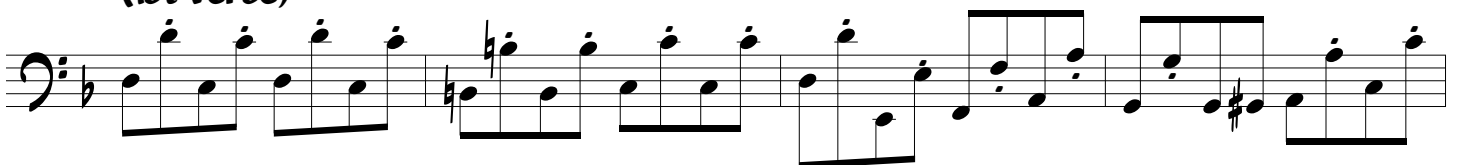
Bass part by
Dan Hartman

$\text{♩} = 121$ (Intro)

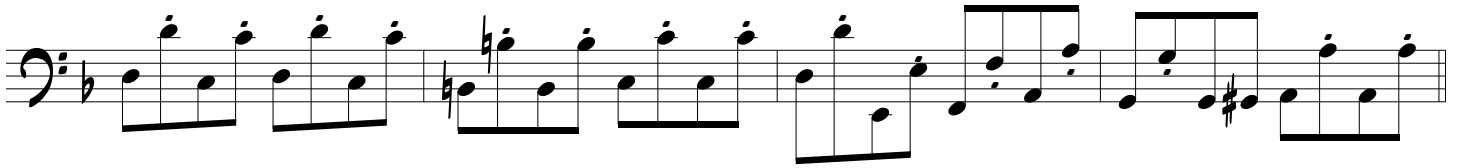
Elec.
Bass



(1st Verse)



Relight My Fire



(Pre-Chorus)



(Chorus)



Relight My Fire

The first two staves of the music are in bass clef with a key signature of one flat (Bb). The first staff contains four measures of music, primarily consisting of quarter notes and eighth notes. The second staff continues the melody and includes some sixteenth-note patterns in the final two measures.

(2nd Verse)

The second and third staves of the 2nd Verse continue the musical theme established in the first two staves, featuring similar rhythmic patterns and melodic lines.

(Pre-Chorus)

The fourth and fifth staves of the Pre-Chorus section show a change in rhythm, with more eighth and sixteenth notes, and include some rests and dynamic markings.

(Chorus)

The sixth and seventh staves of the Chorus section feature a more complex rhythmic structure, including eighth-note runs and some chromatic movement, ending with a double bar line.

Relight My Fire

Three staves of bass clef musical notation. The first two staves contain eighth and sixteenth note patterns. The third staff features a series of eighth notes with accents.

(Breakdown)

Two staves of bass clef musical notation. The first staff has three measures with rests and accents. The second staff has a five-measure rest followed by a melodic phrase.

(Middle 8)

Two staves of bass clef musical notation with eighth and sixteenth note patterns.

(Chorus)

One staff of bass clef musical notation with eighth and sixteenth note patterns and a "stacc" marking.

(repeat to fade)

One staff of bass clef musical notation with eighth and sixteenth note patterns.