

Straight On

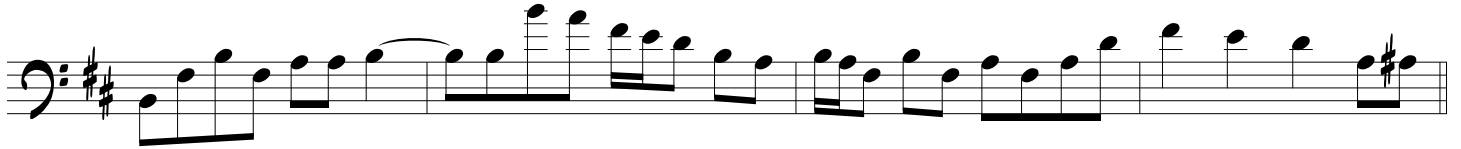
- A. Wilson
- N. Wilson
- S. Ennis

From the album "Dog & Butterfly"
by Heart (1978)

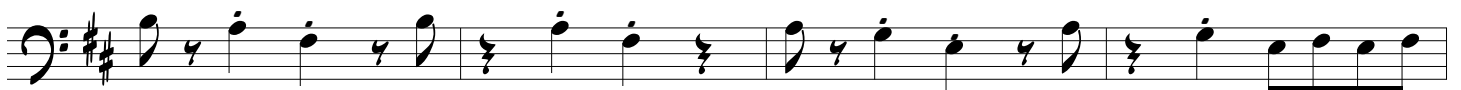
Bass part by
Steve Fossen

$\text{♩} = 116$ (Intro)

Elec.
Bass



(1st Verse)



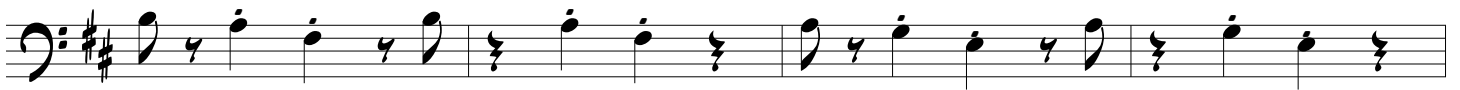
(Chorus)



Straight On



(2nd Verse)



(Chorus)



(Bridge)



Straight On

(Guitar Solo)

The guitar solo section consists of three staves of music in bass clef, D major (two sharps). The first staff begins with a whole note G2, followed by eighth notes A2, B2, C3, D3, E3, F#3, G3. The second staff continues with eighth notes A3, B3, C4, D4, E4, F#4, G4, followed by quarter notes A4, B4, C5, D5. The third staff features eighth notes E5, F#5, G5, A5, B5, C6, D6, followed by quarter notes E6, F#6, G6, A6, B6, C7, D7, and ends with a double bar line.

(Chorus)

The chorus section consists of seven staves of music in bass clef, D major. The first staff starts with a whole note G2, followed by quarter notes A2, B2, C3, D3, E3, F#3, G3, A3, B3, C4, D4, E4, F#4, G4, A4, B4, C5, D5. The second staff continues with quarter notes E4, F#4, G4, A4, B4, C5, D5, E5, F#5, G5, A5, B5, C6, D6, E6, F#6, G6, A6, B6, C7, D7. The third staff features eighth notes E6, F#6, G6, A6, B6, C7, D7, E7, F#7, G7, A7, B7, C8, D8, E8, F#8, G8, A8, B8, C9, D9. The fourth staff has quarter notes E8, F#8, G8, A8, B8, C9, D9, E9, F#9, G9, A9, B9, C10, D10, E10, F#10, G10, A10, B10, C11, D11. The fifth staff continues with quarter notes E11, F#11, G11, A11, B11, C12, D12, E12, F#12, G12, A12, B12, C13, D13, E13, F#13, G13, A13, B13, C14, D14. The sixth staff has quarter notes E14, F#14, G14, A14, B14, C15, D15, E15, F#15, G15, A15, B15, C16, D16, E16, F#16, G16, A16, B16, C17, D17. The seventh staff concludes with quarter notes E17, F#17, G17, A17, B17, C18, D18, E18, F#18, G18, A18, B18, C19, D19, E19, F#19, G19, A19, B19, C20, D20, and ends with a double bar line.

Straight On



(Outro)

